

THE ARCHITECTURAL REVIEW

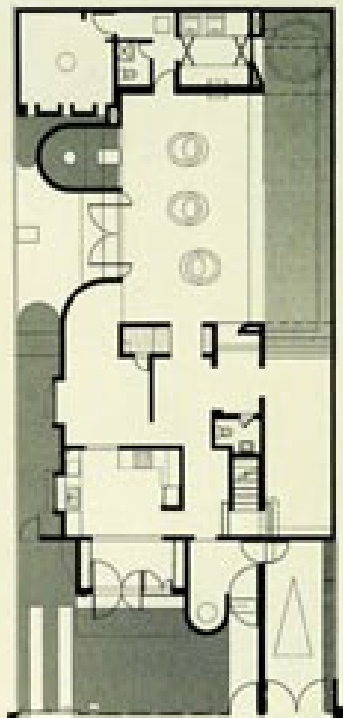
WWW.ARPLUS.COM

UK £7.25 / €13 USA \$22.99 MAY 2008

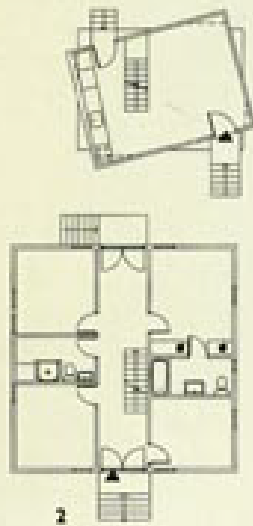


HOUSES

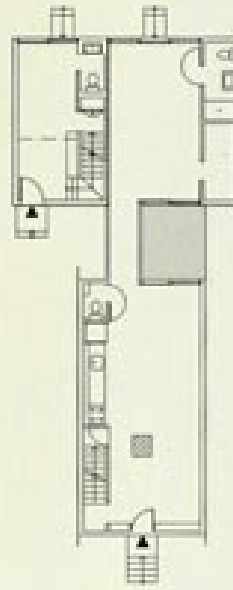
Holl's ambassadorial residence UN Studio's Villa NM Houses by Emerging Architects



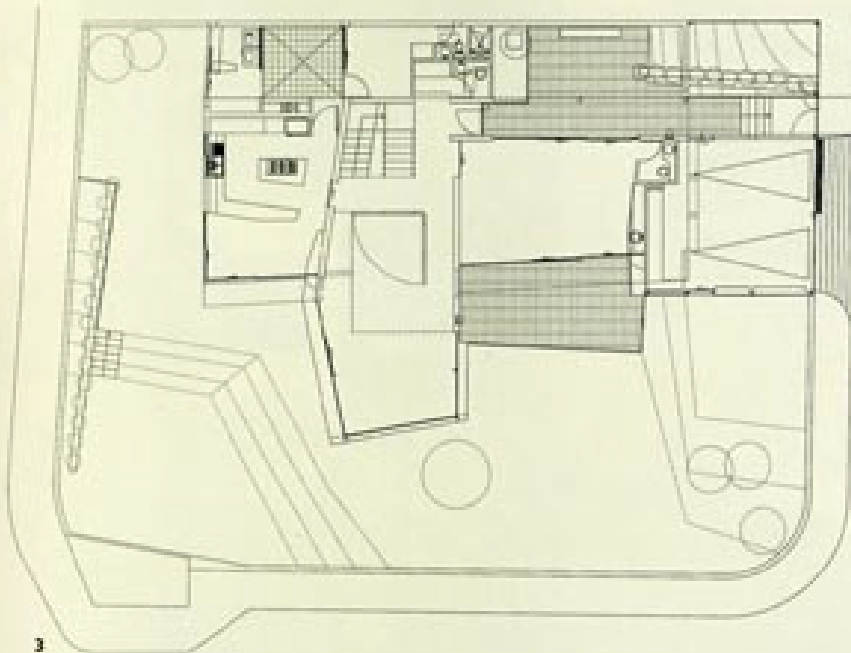
1



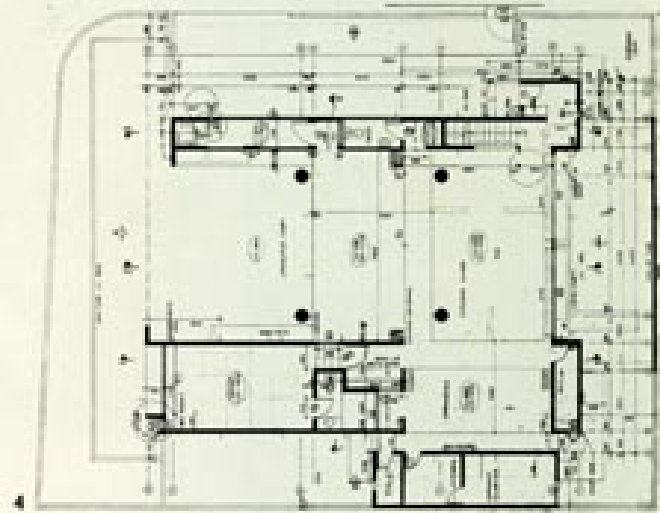
2



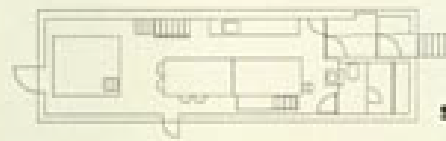
- 1 Puerto Rico, p80
- 2 USA, p76
- 3 Ecuador, p77
- 4 India, p82
- 5 Japan, p79
- 6 Poland, p84
- 7 Turkey, p83
- 8 Portugal, p86
- 9 Norway, p87
- 10 South Korea, p83
- 11 Chile, p81
- 12 Indonesia, p80
- 13 Denmark, p86
- 14 Switzerland, p76
- 15 Australia, p78
- 16 UK, p85
- 17 Luxembourg, p84



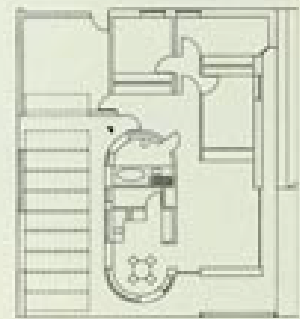
3



4



5



6

Young house

For the last eight years the AR Awards for Emerging Architecture have consistently attracted hundreds of entries from architects and designers below the age of 45.* In 2006, 462 entries were received from 53 countries. Within this varied array, that ranged in scale and complexity from furniture and products to significant large buildings such as an airport, the most well represented building type was the private house. Four of these were selected as part of the awards exhibition and featured in the awards issue (AR December 2006); 76 others remain unseen.

This selection of 17 is a cross section of these unseen entries, with each project located in a different country. Seen together it not only demonstrates the breadth of the AR Awards, which recognise emerging talent and ideas that look beyond image, trend or style. It also acts

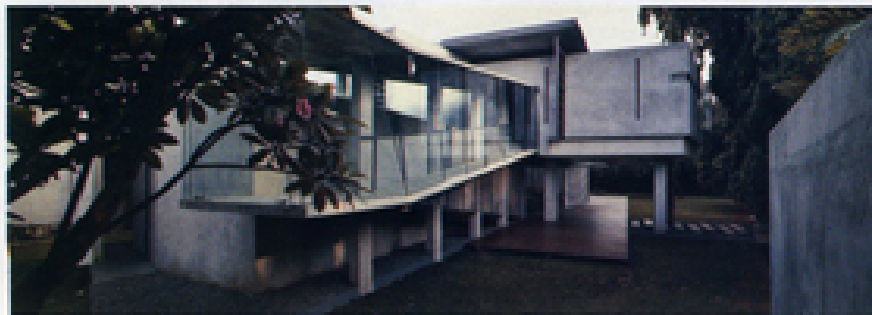
in microcosm as a global survey that allows us to understand some of the preoccupations that relate to specific contexts, climates and communities. From as far afield as Poland, Portugal and Puerto Rico, each house is responsive and characterful in relation to the needs of client and obligations to site. Through this, despite concerns regarding the mediocrity of globalisation, in its own modest way, this selection demonstrates that diversity and specificity still exist and inspire. Perhaps, even, in the same way that canonical houses of the twentieth century go some way to summarise the century's architectural history (p36), these projects give us a glimpse of things to come. To enable comparison, each plan has been printed at the same scale (1:350). ROB GREGORY

*We will soon be accepting entries for the 2007 AR Awards for Emerging Architecture.

This residential space complements the lifestyle of a young businessman with a busy schedule and high degree of mobility. It has no rigid angles and the mass is elevated on columns, creating open functional spaces, such as a kitchen and living room. The materials are easy to maintain and no artificial lighting is needed during the day. There is a constant shift of movement in this static building.



- 1 The mass of the house is elevated above the ground.
- 2 Circulation: a glazed ramp.
- 3 Internal spaces open up to external courtyards.

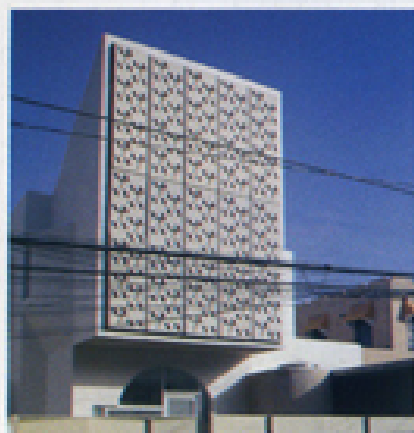


2

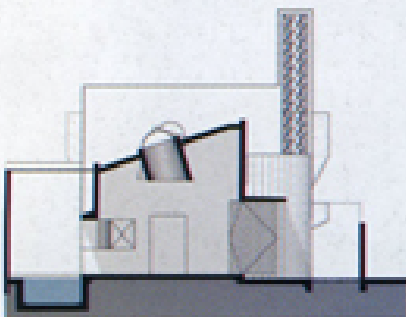
**WINFRED HUTABARAT
RESIDENCE, INDONESIA**
ARCHITECT
ANDRAMATIN



3



1



section through living room and pool

**CASA DELPIN,
SAN JUAN, PUERTO RICO**
ARCHITECT
FÜSTER & PARTNERS



2

- 1 GRC panels are used to screen balconies on the principal elevation.
- 2 Similar GRC panels are used above the pool to provide shade and a play of light.

Casa Delpin is the product of the renovation and addition to an existing single-family house in San Juan. Typical of such urban structures, it had dark, hot, segregated interior spaces which had little dialogue with the exterior. The design objective was to create a rich living space with greater capacity for passive lighting and cooling. This is achieved through a variety of techniques, including the use of perforated glass reinforced concrete (GRC) panels, that reorient public patios towards the interior and conical skylights to diffuse natural light throughout the house.

Floor area 360sqm