

THE PHAIDON ATLAS OF 21ST CENTURY WORLD ARCHITECTURE

1,020 Buildings	226 Single Houses	10 Libraries
	28 Schools	8 Embassies
656 Architects	29 Art Galleries	12 Churches
	64 Museums	16 Railway Stations
6 Geographical Regions	41 Apartment Buildings	⊕
	29 Town Halls	
	61 Office Buildings	
	59 Universities	
75 Countries	1 International Airports	

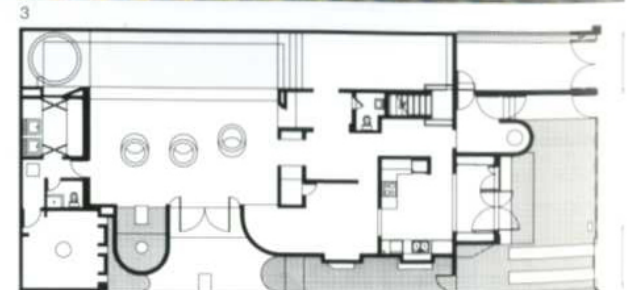
0951

San Juan,
Puerto Rico,
Caribbean

Delpin House

Fuster + Partners

2006
RES



0951 Delpin House is slotted into a tight plot in San Juan's northern suburb of Santurce. The project is a renovation of and addition to an existing house built in the 1940s. Structurally hermetic, the original house had a poor relationship to its surroundings, and was composed internally of a series of segregated rooms lacking daylight and ventilation. A new concrete addition fills what was once a backyard, providing additional living space and a pool.

The internal spaces are focused around this new, open-plan living area. Here, the roof is pierced with three large, concrete cylinder skylights which channel light into the house. Set at varying angles, these openings bring in different qualities of light throughout the day. Smaller, diagonal slat openings also allow rays of light into the house, which reflect on the surface of the pool. The revised spatial organization, together with the new openings, allows cross breezes to cool the

building naturally. The spacious house skilfully plays new elements against the old. Its orthogonal volumes and rough concrete surfaces are reminiscent of twentieth-century modernist architecture. Certain existing features remain in place, such as the original floor tiles and their geometric patterns, which are picked up in aspects of the building's design. The light coloured, glass-reinforced concrete used matches the material palette of tropical San Juan.

- 1 Street facade
- 2 Detail of pool
- 3 View of living area and pool
- 4 Ground-floor plan

Client
Carlos and Eneida Delpin
Area
1,179 m²/12,691 sq ft
Cost
US\$400,000
Coordinates
18.4516 -66.0821